



CINDERELLA

Relaxed Performance

Cambridge Arts Theatre

Saturday 14 December, 11am

This visual story is designed for visitors to the Relaxed Performance of *Cinderella*. Relaxed Performances are for people who will benefit from a more relaxed performance environment including people with an Autism Spectrum Condition, sensory or communication disorders, or a learning disability.

Where is the pantomime?

The pantomime is being performed at Cambridge Arts Theatre, on Peas Hill, near the market.

General information about Cambridge Arts Theatre

There are two entrances to Cambridge Arts Theatre.

This is the entrance on
Peas Hill



This is the entrance on
St Edward's Passage



This is the **Foyer** (inside area of the theatre) where people wait to go into the auditorium. It can get quite busy.



This is the **Box Office**, where you can collect your tickets.



There are three bars. You can buy drinks and snacks here.

The Maynard Bar



The Circle Bar

→



The Stalls Bar

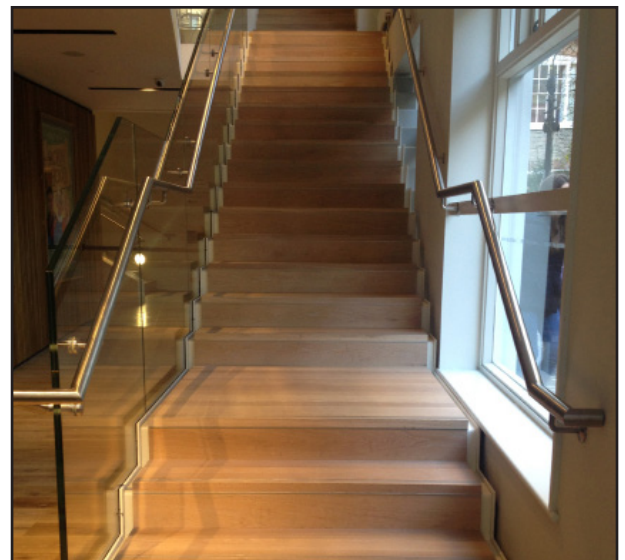
→



This is what the entrances to the auditorium looks like. One says **Stalls Right Entrance**. The Circle entrances say **Circle Right Entrance** and **Circle Left Entrance**.
→



If you are sitting in the Circle (upstairs) you will need to go upstairs.
→



These are the seats in the auditorium.
→



What to expect at Cinderella

There is a very sparkly Fairy Godmother.



Some of the characters will shout and can be quite loud.

There will be songs that you might know in the pantomime.



The Ugly Sisters, Ivanka and Melania, are men pretending to women.



Prince Charming and Dandini are women pretending to be men.



Sometimes the Fairy Godmother pretends to be a weak old woman to see if people are really kind and good.



There is a pretend Horse and Carriage which flies.



There is a transformation when Cinderella turns into Princess Starlight.



Cinderella is locked in a cupboard for a little while.



The actors may ask you to join in with things like singing, dancing and shouting. This is all done from your seat and can make it very loud in the theatre. The actors will ask a few people to go onstage and join in. You can only go onstage if you are asked.



Sometimes it seems like people get hurt but it is pretend.



The pantomime is 2 hours 20 minutes long with an interval (where you can go to the toilet, have a drink and walk around the theatre).

If you have any questions regarding the Relaxed Performance please speak to a member of the Front of House team on your arrival.

If you have any questions, before the show, please contact our Box Office on 01223 503333 or email boxoffice@cambridgeartstheatre.com.

Cinderella