



DICK WHITTINGTON

Relaxed Performance

Cambridge Arts Theatre

Saturday 10 December 2022, 10am

This visual story is designed for visitors to the Relaxed Performance of *Dick Whittington*. Relaxed performances are for people who will benefit from a more relaxed performance environment including people with an Autism Spectrum Condition, sensory or communication disorders, or a learning disability.

Where is the pantomime?

The pantomime is being performed at Cambridge Arts Theatre, on Peas Hill, near the market.

General information about Cambridge Arts Theatre

There are two entrances to Cambridge Arts Theatre.

This is the entrance on
Peas Hill



This is the entrance on
St Edward's Passage



Cambridge Arts
Theatre

This is the **Foyer** (inside area of the theatre) where people wait to go into the auditorium. It can get quite busy.



This is the **Box Office**, where you can buy or collect your tickets.



There are three bars. You can buy drinks and snacks here.

The Maynard Bar



The Circle Bar



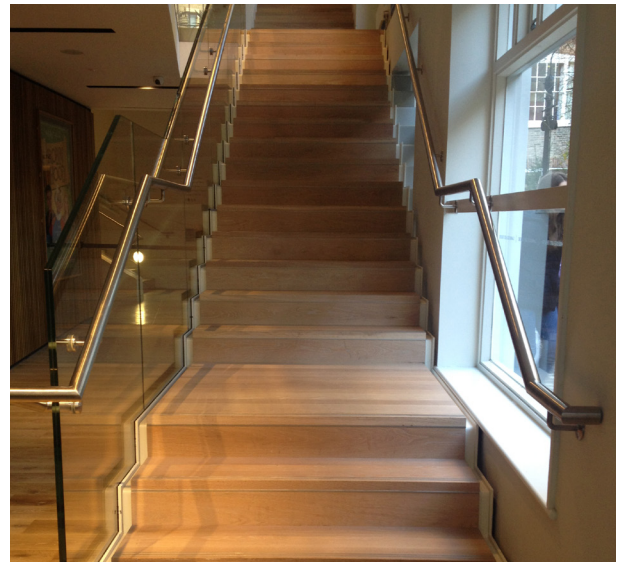
The Stalls Bar



This is what the entrances to the auditorium looks like. One says **Stalls Right Entrance**. The Circle entrances say **Circle Right Entrance** and **Circle Left Entrance**.
➔



If you are sitting in the circle (upstairs) you will need to go up a set of stairs to get to your seats.
➔



These are the seats in the auditorium.
➔



What to expect at Dick Whittington

There is a very sparkly fairy called Fairy Bowbells.



Some of the characters will shout and can be quite loud.

There will be songs that you might know in the pantomime.



The Dame, Sarah the Cook, is a man pretending to woman.



Dick Whittington is the hero of the story. He is a handsome, kind man.



The baddie is King Rat. He has a pretend tail. At the beginning he is scary but magic turns him good at the end.



There is a talking cat called Tommy.



There is a fight between Dick Whittington, Tommy the Cat and King Rat. It is pretend and no-one is hurt.



The actors may ask you to join in with things like singing, dancing and shouting. This is all done from your seat and can make it very loud in the theatre. The actors will ask a few people to go onstage and join in. You can only go on stage if you are asked.



Sometimes it seems like people get hurt but it is pretend.



The pantomime is 2 hours 25 minutes long with a 20 minute interval (where you can go to the toilet, have a drink and walk around the theatre).

If you have any questions regarding the Relaxed Performance please speak to a member of the Front of House team on your arrival.

If you have any questions before the show please contact our Box Office on 01223 503333 or email boxoffice@cambridgeartstheatre.com.